

## Firelock Radiation Standard

### FIRE-RESISTANT ROLLING DOOR

The primary aim of a fire-resistant rolling door is to protect people and property by preventing the spread of fire. Firelock Radiation fire-resistant rolling doors are connected to the fire alarm system.

When an alarm has sounded, the doors close and form a physical barrier. The Firelock Radiation rolling doors are constructed of a double-walled galvanised steel profile filled with insulating rock wool.

### STANDARD SPECIFICATIONS

Installation:	On the wall or on the ceiling.
Application:	Airports, retail sector, food processing, petrochemical sector, metro stations, storage units, etc.
Fire resistance:	Tested according to standard EN 1634-1. Fire resistance classes: EW30 and EW60.
Max. dimensions:	4,000 x 4,500 mm (WxH). No limitation on maximum opening.
Material:	Double-walled, hot-dip galvanised steel, reinforced and insulated slats.
Slat dimensions:	22 x 100 mm (DxH)
Metal thickness:	0.8 mm
Weight: approx.	30 kg/m <sup>2</sup>
Fall protection:	Standard installation according to standards EN 12604 and EN 12605.
Side guides:	100 mm wide, galvanised steel profiles.
Bottom beam:	Steel U-profile, optionally provided with safety device.

### FAIL SAFE

Firelock Radiation fire-resistant rolling doors are equipped with an external Gravity Fail Safe (GFS) chain drive. In the event of power failure, the rolling doors automatically close via an internal electromagnetic clutch.

### STANDARD MODEL

- ▲ Firelock Smart Control control box for operation and signals.
- ▲ Push button or key switch for manual operation.
- ▲ Gravity Fail Safe (GFS) motor
- ▲ 24V emergency power batteries. In the event of power failure, the rolling door closes after a pre-set period or after a fire alarm.
- ▲ Safety braking device, to insure a controlled descent.
- ▲ Connection to the fire alarm system.

### OPTIONS

- ▲ Safety bar
- ▲ Rolled door enclosed in housing
- ▲ Motor enclosed in housing
- ▲ Smoke and temperature sensors for autonomous operation without fire alarm system
- ▲ Powder-coated side guides, guard, roller shutter and console

- ▲ 30 or 60 minutes of fire resistance
- ▲ EW classification (standard EN 1634-1)
- ▲ Physical fire separation
- ▲ Suitable for airports, retail sector and industry, among others
- ▲ Gravity Fail Safe - GFS
- ▲ Various operational options
- ▲ Easy to use and maintain



By Appointment to  
the Court of  
the Netherlands

# Firelock Radiation Standard

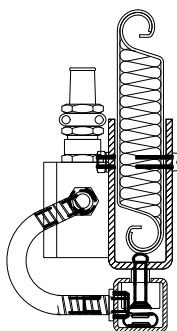
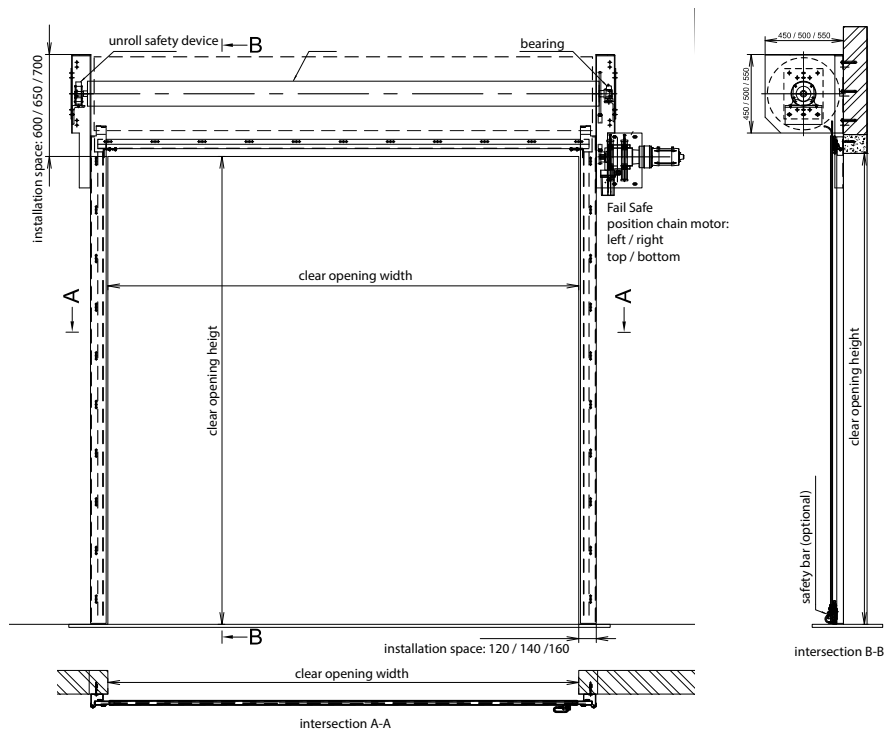


## Hoefnagels Fire Safety

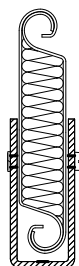
Zevenheuvelenweg 50  
5048 AN Tilburg

P.O. Box 5036  
5004 EA Tilburg  
The Netherlands

Tel. +31 13 4625959  
info@hoefnagels.com  
www.hoefnagels.com



safety bar (optional)



bottom bar (standard)