



## Firescreen Radiation R1 / R2 / R3

### FIRE-RESISTANT FIRE CURTAIN

Firescreen Radiation fire-resistant fire curtains are flame-resistant and limit heat radiation to a maximum of 15 kW/m<sup>2</sup> (W). This prevents temperatures in neighbouring areas of the building becoming so high that fire can occur. All Firescreen Radiation fire curtains are suitable as barriers for fire compartments.

### STANDARD SPECIFICATIONS

Installation:	Inside mount and on the wall.
Application:	Industry, commercial buildings, public buildings and healthcare institutions.
Function:	Door closes only in the event of a fire alarm.
Fire resistance:	Tested according to standard EN 13501-2. Fire resistance classes: EW30, EW60, and EW90.
Reaction to fire:	Tested according to standard EN 13501-1. Meets the following criteria: <ul style="list-style-type: none"> <li>• B</li> <li>• S1</li> <li>• D0</li> </ul>
Material:	Technical textile, provided with a smoke-proof coating, based on polyurethane, double-walled, filled with needle mat.
Material thickness:	8 mm total thickness
Cloth weight per m <sup>2</sup> :	2 kg/m <sup>2</sup>
Side guide rails:	Sendzimir galvanised sheet steel profile
Head box:	Sendzimir galvanised sheet steel
Bottom bar:	Steel tubular profile

### CONTROL OPTIONS

- GFS (Gravity Fail Safe)

The fire-resistant fire curtain is equipped with a 230V tubular motor which is driven by the control box of the Firescreen Control. In the event of power failure, the screen closes by gravity. Open/close buttons on the control box of the Firescreen Control to manually operate the system.

- EFS (Electrical Fail Safe)

The fire-resistant fire curtain is equipped with a 24V tubular motor which is driven by the control box of the Firescreen Control and 24V emergency power batteries. In the event of power failure, the screen closes with these emergency power batteries. Key switch for operation/reset.

### FIRESCREEN CONTROL

The control box can be connected to the fire alarm system and has LED indicators for:

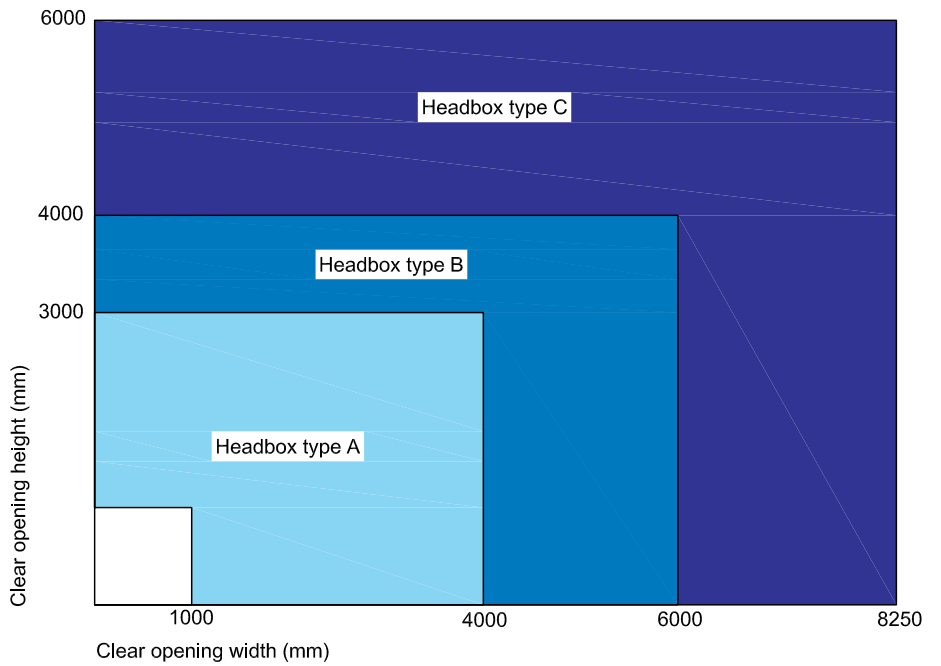
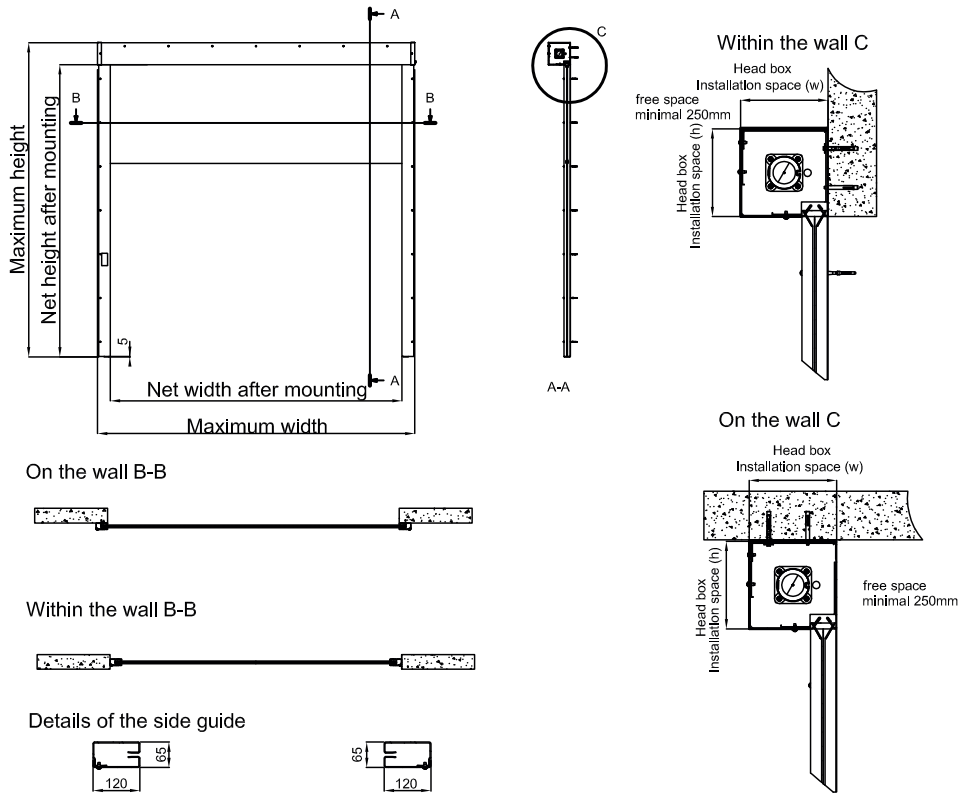
- Power supply
- Active fire signal
- Maintenance status
- Battery status

### OPTIONS

- Powder-coating of side guides, head box and consoles in any desired RAL colour.
- Emergency push button
- Smoke and temperature detectors
- Strobe light and/or buzzer
- External LED display (in case the control box is concealed above the ceiling).
- Emergency power batteries (only for GFS). Prevent screen closure in the event of a short power interruption.

- ▲ 90 minutes of fire resistance
- ▲ Installation as inside mount or on the wall
- ▲ Thermal radiation max. 15 kW/m<sup>2</sup>
- ▲ Tested according to standard EN 1634-1 / EN 15269-11
- ▲ Tested according to standard EN 13501-1
- ▲ Little installation space and side space needed
- ▲ Lightweight

# Firescreen Radiation R1 / R2 / R3



Installation space (Width x height) (mm)

- Headbox type A : 225 x 225 mm
- Headbox type B : 275 x 275 mm
- Headbox type C : 345 x 345 mm



Hoefnagels Fire Safety  
 Zevenheuvelenweg 50  
 5048 AN Tilburg

P.O. Box 5036  
 5004 EA Tilburg  
 The Netherlands

Tel. +31 13 4625959  
 info@hoefnagels.com  
 www.hoefnagels.com

