

- ▲ 240 minutes fire resistant
- ▲ EW classification (EN 1634-1)
- ▲ Physical fire separation
- ▲ Suitable for distribution centers, airports, retail and industry
- ▲ Various operating options
- ▲ Easy to use and maintain

Firelock Radiation Twin

FIRE-RESISTANT ROLLER DOOR

The primary purpose of a fire resistant roller door is to protect people and property by preventing fire from spreading. Firelock Radiation Twin fire-rated roller shutters are connected to the fire alarm system. After an alarm signal the doors close and form a physical barrier. Firelock Radiation Twin roller shutters are double faced and constructed of double wall galvanized and rolled steel profile with insulating rock wool in between.

STANDARD SPECIFICATIONS

Frequency of use:	Waiting/incidental when applying standard armor thickness
Installation:	On-wall
Mounting surface:	Suitable for aerated concrete, concrete, brick, solid brick and fire-resistant coated steel
Application:	Distribution centers, airports, retail, food processing, petrochemical, metro stations, storage units, etc
Fire resistance:	According to EN 1634-1. Fire resistance classes EW120 (=maximum according to EN 13501-2), EI ₁ 20 and EI ₂ 20. Protection duration maximum 240 minutes according to EW criteria
Max. dimensions:	3,300 mm x 3,900 mm (w x h) Other dimensions on request
Material:	Double-walled, hot-dip galvanized steel, reinforced and insulated slats
Dimensions of slats:	22 x 100 mm (d x h)
Armor thickness:	0.8 mm
Weight:	approx. 30 kg / m ²
Antivalve protection:	Fitted as standard in accordance with EN 12604 and EN 12605
Side guides:	120/140 mm wide, galvanized steel profiles
Console:	UNP

FAIL SAFE

Firelock Radiation Twin fire-rated roller shutters are equipped with an external Gravity Fail Safe (GFS) chain drive with a 400V self-closing motor in case of power failure.

STANDARD VERSION

- ▲ Smartbox Smart Control control box for operation and signals
- ▲ Gravity Fail Safe (GFS) motor
- ▲ Safety brake device, to ensure a controlled descent
- ▲ Connection to the fire alarm system

OPTIONS

- ▲ Safety bar
- ▲ Enclosure around coiling
- ▲ Enclosure around the motor
- ▲ Stainless steel side guides and casing
- ▲ Powder coating of visible parts
- ▲ Emergency handling
- ▲ Armor thickness 1.0 mm



By Appointment
to the Court of
the Netherlands

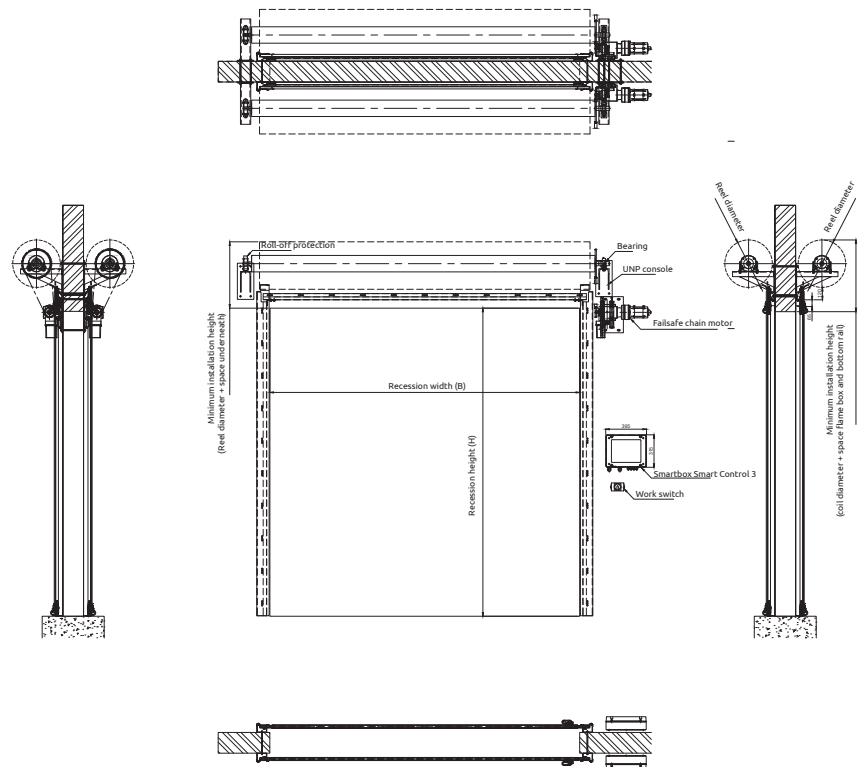
Firelock Radiation Twin



Hoefnagels Fire Safety
Zevenheuvelenweg 50
5048 AN Tilburg

P.O. Box 5036
5004 EA Tilburg
The Netherlands

Tel. +31 13 4625959
info@hoefnagels.com
www.hoefnagels.com



Minimum installation space for roller Ø 159

Recession height H (mm)	Roll-up diameter D (mm)	Minimal required space above recess (mm)
1000	340	580
1500	350	590
2000	400	640
2500	410	650
3000	450	690
3500	470	710
4000	490	730



By Appointment
to the Court of
the Netherlands

