

## Firescreen® Radiation R1 / R2 / R3

### FIRE-RESISTANT FIRE CURTAIN

Firescreen Radiation fire-resistant fire curtains are flame-resistant and limit heat radiation to a maximum of 15 kW/m<sup>2</sup> (W). This prevents temperatures in neighbouring areas of the building becoming so high that fire can occur. All Firescreen® Radiation fire curtains are suitable as barriers for fire compartments.

We can optionally supply this roller screen with a smoke-resistant function, in accordance with the Sa standard. The screen is then smoke-resistant against smoke with an ambient temperature of ± 20 °C.

### STANDARD SPECIFICATIONS

Installation:	Inside mount and on the wall.
Application:	Industry, commercial buildings, public buildings and healthcare institutions.
Function:	The screen closes only in the event of a fire alarm.
Fire resistance:	Tested according to standard EN 13501-2. Fire resistance classes: EW30, EW60, and EW90.
Reaction to fire:	Tested according to standard EN 13501-1. Meets the following criteria: B, S1, D0
Material:	Technical textile, provided with a smoke-proof coating, based on polyurethane, double-walled, filled with needle mat.
Material thickness:	8 mm total thickness
Cloth weight per m <sup>2</sup> :	2 kg/m <sup>2</sup>
Side guide rails:	Sendzimir galvanised sheet steel profile
Head box:	Sendzimir galvanised sheet steel
Bottom bar:	Steel tubular profile

### CONTROL OPTIONS

#### • GFS (Gravity Fail Safe)

The fire-resistant fire curtain is equipped with a 230V tubular motor which is driven by the control box of the Firescreen Control. In the event of power failure, the screen closes by gravity. Open/close buttons on the control box of the Firescreen Control to manually operate the system.

#### • EFS (Electrical Fail Safe)

The fire-resistant fire curtain is equipped with a 24V tubular motor which is driven by the control box of the Firescreen Control and 24V emergency power batteries. In the event of power failure, the screen closes with these emergency power batteries. Key switch for operation/reset.

### FIRESCREEN CONTROL

The control box can be connected to the fire alarm system and has LED indicators for:

- Power supply
- Active fire signal
- Maintenance status
- Battery status

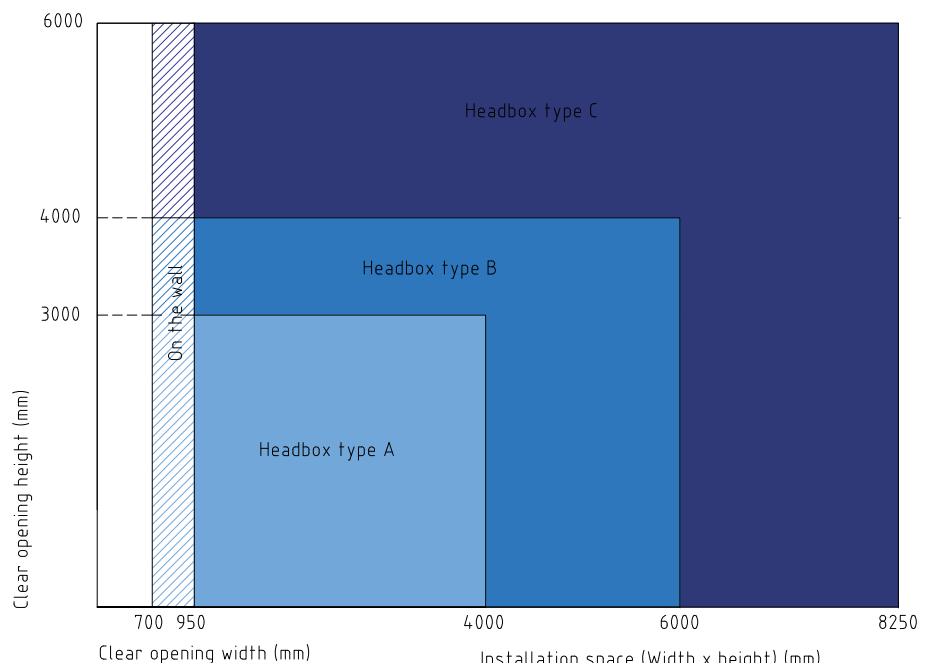
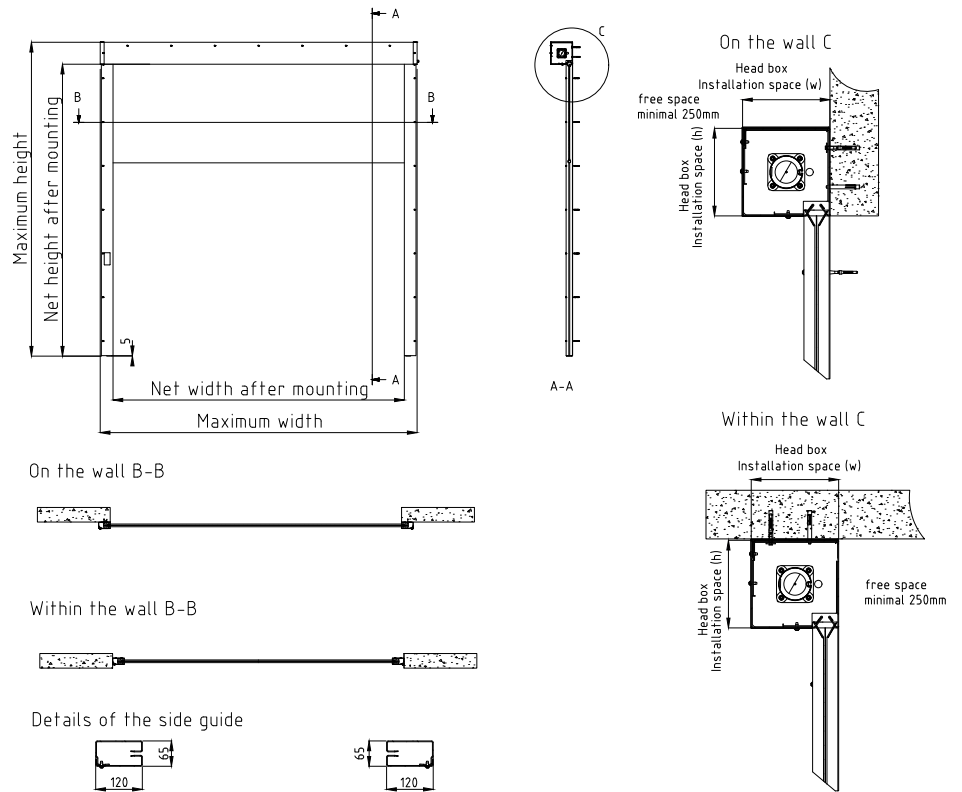
### OPTIONS

- Available with smoke-resistant function, in accordance with the Sa standard: EN 1634-3. Please note: this affects the dimensions of the side guides and net passage. See the drawing on page 3 of this leaflet.
- Powder-coating of side guides, head box and consoles in any desired RAL colour.
- Emergency push button
- Smoke and temperature detectors
- Strobe light and/or buzzer
- External LED display (in case the control box is concealed above the ceiling).
- Emergency power batteries (only for GFS). Prevent screen closure in the event of a short power interruption.



Purveyor  
to the  
Royal Household

# Firescreen® Radiation R1 / R2 / R3 Regular



Installation space (Width x height) (mm)

Headbox type A : 225 x 225 mm

Headbox type B : 275 x 275 mm

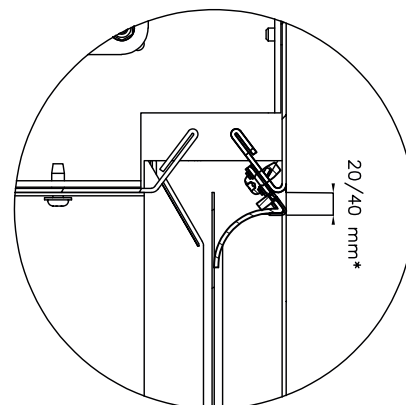
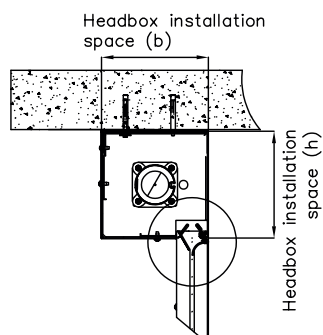
Headbox type C : 345 x 345 mm

Mind this: With the Sa option, the mounting surface differs in terms of dimensions.

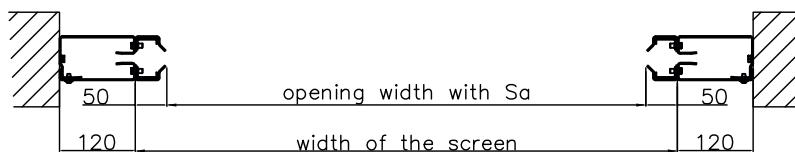
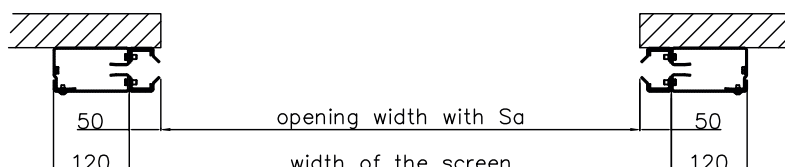
**Hoefnagels Fire Safety**  
Zevenheuvelenweg 50  
5048 AN Tilburg (NL)

Tel. +31 13 4625959  
info@hoefnagels.com  
www.hoefnagels.com

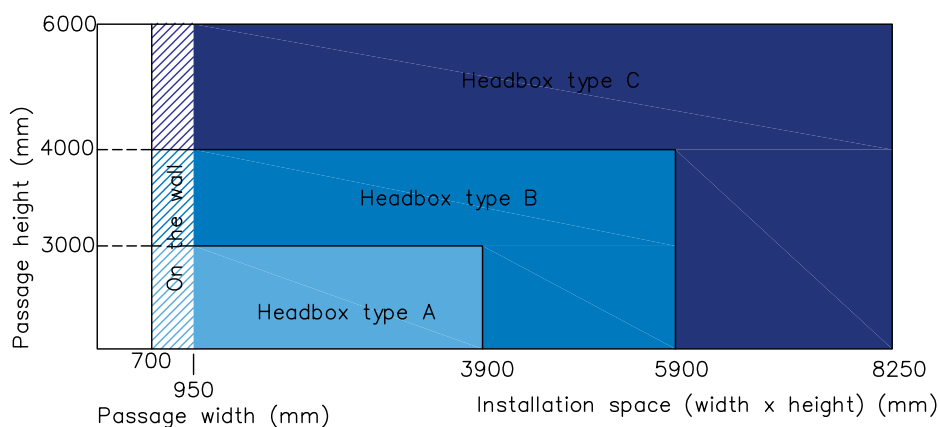
# Firescreen® Radiation R1 / R2 / R3 With Sa / smoke-resistant



\* screens <2000mm wide = 40mm  
screens >2000mm wide = 20mm



Maximum size of Sa screens: 2x height of passage + width of passage < 18.000 mm.



**Hoefnagels Fire Safety**  
Zevenheuvelenweg 50  
5048 AN Tilburg (NL)

Tel. +31 13 4625959  
info@hoefnagels.com  
www.hoefnagels.com