



Firelock Radiation Twin

240 MIN. FIRE-RESISTANT ROLLING DOOR

The key purpose of a fire-resistant rolling door is to guarantee maximum safety for the public, objects and personnel. The fire-resistant rolling door prevents fire from spreading. Firelock Radiation Twin fire-resistant rolling doors are connected to the fire alarm system. When an alarm has sounded, the doors close and form a physical barrier. Firelock Radiation Twin roller shutters are double faced and constructed from a double-walled galvanised steel profile filled with insulating material. This rolling door is fire-resistant for 240 minutes.

STANDARD SPECIFICATIONS

Installation:	On the wall
Mounting surface:	Suitable for aerated concrete, concrete, brick, solid brick, and fire-resistant clad steel.
Application:	Distribution centres, airports, retail sector, food processing, petrochemical sector, metro stations, storage units, etc.
Indoors/outdoors:	Suitable for both indoor/indoor and indoor/outdoor situations.
Fire resistance:	In accordance with standard EN 1634-1. Fire resistance classes E240, EW120 (=maximum in accordance with EN 13501-2), EI ₁ 20 and EI ₂ 20.
Protection time:	Maximum 240 minutes in accordance with EW criteria .
Maximum dimensions:	7,000 mm x 7,500 mm (WxH) Other dimensions upon request.
Construction:	Double-skinned rolling door.
Material of slats:	Double-walled steel slats, filled with fire-resistant insulation material.
Dimensions of slats:	22 mm x 100 mm (WxH)
Armor thickness:	0.8 mm
Weight:	Approx. 30 kg/m ²
Bottom beam:	Steel U-profile, optionally provided with security device.
Fall protection:	Standard installation according to standards EN 12604 and EN 12605.
Sideguides:	Galvanised steel profiles, width 120/140 mm

FAIL SAFE

Firelock Radiation Twin fire-resistant rolling doors are equipped with an external Gravity Fail Safe (GFS) chain drive with a 400V self-closing drive system in the event of a power failure.

STANDARD MODEL

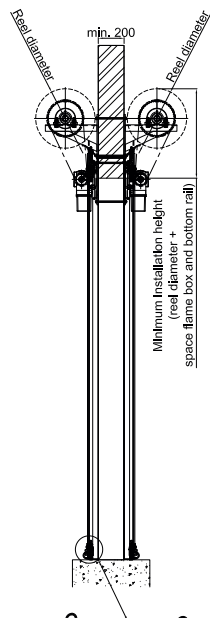
- Smartbox Smart Control control box for operation and signals.
- Gravity Fail Safe (GFS) drive system.
- 24V emergency power batteries. In the event of power failure, the rolling door closes after a pre-set period or after a fire alarm.
- Safety brake device, to ensure a controlled descent.
- Connection to the fire alarm system.

OPTIONS

- Safety bar.
- Rolled door enclosed in housing.
- Drive system enclosed in housing.
- Upper roll on steel sheet consoles or on steel UNP consoles.
- Armor thickness: 1.0 mm.
- Visible parts powder-coated.
- Smoke and temperature sensors for autonomous operation without fire alarm system.

- ▲ 240 minutes of fire resistance
- ▲ EW classification (standard EN 1634-1)
- ▲ Physical fire separation
- ▲ Suitable for distribution centres, airports, retail sector and industry
- ▲ Suitable for: indoor/indoor and indoor/outdoor situations
- ▲ Gravity Fail Safe - GFS
- ▲ Various operational options
- ▲ Easy to use and maintain

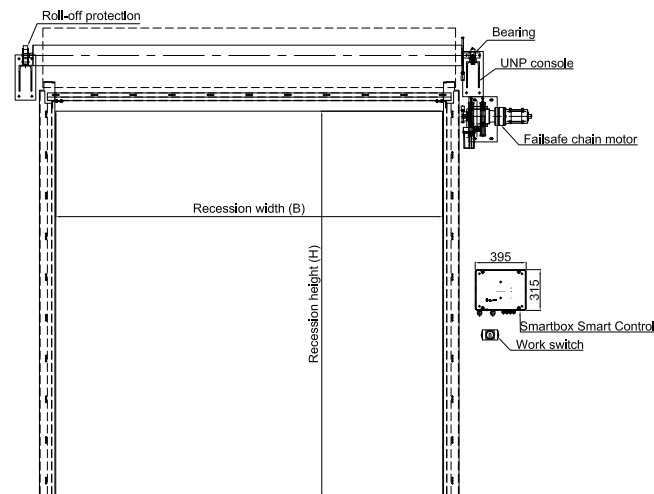
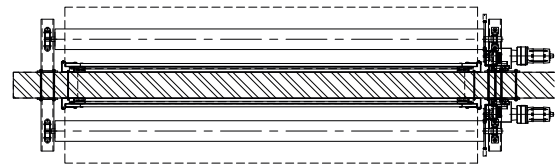
Firelock Radiation Twin



Safety bar (Optional)



Bottom bar (Standard)



Hoefnagels Fire Safety
 Zevenheuvelenweg 50
 5048 AN Tilburg (NL)

Tel. +31 13 4625959
 info@hoefnagels.com
 www.hoefnagels.com

