

Firegate Temperature-P

FIRE RESISTANT SECTIONAL DOORS

Hoefnagels' partner Winlock specialises in high-quality fire resistant overhead doors/sectional doors. These doors are used for fire compartmentation in situations where high fire resistance is required, such as industrial premises, warehouses, factories and distribution centres.

In addition to offering fire resistance, overhead doors can be tailored with various features including burglary resistance, soundproofness and explosion resistance, based on specific customisation requirements.

STANDARD SPECIFICATIONS

Installation:	On the wall.
Mounting surface:	Aerated concrete, concrete blocks, poured concrete and quick-build masonry.
Application:	In industrial buildings, such as warehouses, distribution centres, industrial workshops and factories.
Fire resistance class:	EI1 60, EI1 120, EI1 180, EI1 240 - according to standard EN 1634-1. Tested on both sides.
Length of protection:	60 - 120 - 180 - 240 minutes according to EI criteria.
Dimensions:	Various: large sizes of up to 30 square metres available on request.

STRUCTURE

- The entire door is closed by steel wheels guided in a rail profile, with one wheel on the left and right of each panel.
- A door consists of several panels composed of two 0.8-mm steel plates.
- Each module can be fitted with panes of fire-resistant glazing (up to 3 per panel).
- The doors are powder coated on both sides as standard in one of the following standard RAL colours: 3000 / 9010 / 9002 / 9006 / 7016 / 9005.

CONTROL BOX

The fire-resistant overhead door is controlled by WIPO® 2.0 software, which combines the requirements of fire safety with open communication and transparency towards the direct user.

FAIL SAFE

If fire is detected, the door lowers slowly. The safety edge remains active: if someone moves between the photoelectric sensors while the door is closing, the sectional door will stop, wait until the passage is clear, and then close further. In the event of a power failure, the door remains up for a maximum of 48 hours before slowly lowering.

INSTALLATION OPTIONS

- Lowered lift. When there is limited space above the door: between 500 and 600 mm.
- Horizontal lift. When there is more than 600 mm of space above the door. The door rises as high as possible and then deflects.
- Angled lift. The door rises as high as possible and then slopes up at an angle of less than 45°.
- Vertical lift. The door goes up vertically.

OPTIONS

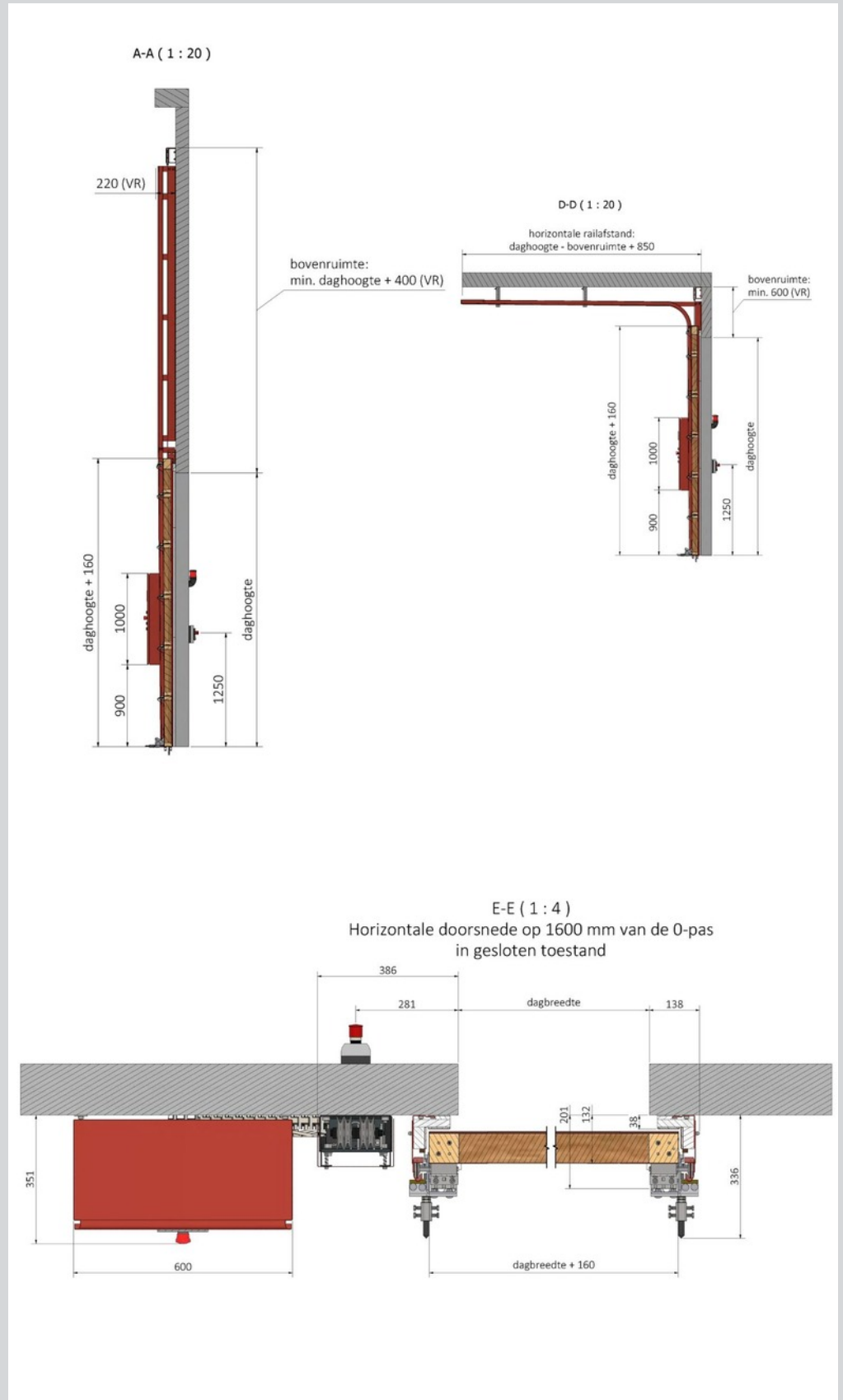
- Various finishes on the steel plating available: clearcoat, wood veneer in the wood of your choice, plastic coating or personalised stickers.
- As a variant of the steel plating: stainless steel or galvanised sheet cladding.
- Powder coating of visible parts in non-standard RAL colours at additional cost.

Extra functionalities:

- ▲ Liquid barrier
- ▲ Burglary-resistant
- ▲ Outdoor application
- ▲ Soundproof
- ▲ Explosion resistant
- ▲ Smokeproof
- ▲ Frost resistant
- ▲ Food safe
- ▲ Windproof
- ▲ Thermal isolation
- ▲ Earthquake resistant
- ▲ Pressure resistant



Firegate Temperature-P



Hoefnagels Fire Safety
Zevenheuvelenweg 50
5048 AN Tilburg (NL)

Tel. +31 13 4625959
info@hoefnagels.com
www.hoefnagels.com

